



20W SERIES

CONDUCTIVE FABRIC



AE20W-FC



AE22W-FC



PE20W-FC



PE22W-FC

Super Heavy Duty 450 lbs, Capacity, Waterfall 3" High Resilient Density Foam for Better Comfort

MODEL	Upholstery Type	Height Adjustment	Seat Dimensions	Back Dimensions	Footring	Base	Drag Chain	Caster
AE20W-FC	Conductive Fabric	21"-31"	21.5"W x 18"D	19"W x 16.5"H	20"	Polished Aluminum	No	9
AE22W-FC	Conductive Fabric	17"-22"	21.5"W x 18"D	19"W x 16.5"H	No	Polished Aluminum	No	9
PE20W-FC	Conductive Fabric	21"-31"	21.5"W x 18"D	19"W x 16.5"H	20"	Black Nylon	Yes	1
PE22W-FC	Conductive Fabric	17"-22"	21.5"W x 18"D	19"W x 16.5"H	No	Black Nylon	Yes	1

Conductive Seating Features:

Industrial Seating™conductive seating insures a safe, static-clear work area. All IS™ conductive seating models are equipped with conductive seat cushions, Back cushions, as well as all metal parts and the IS™ dual resistance system.

Isstat Group IV Fabrics ESD

• Material 98% Polyolefin, 2% Carbon Infused Nylon • Surface Resistance: 10⁶ omhs per Square

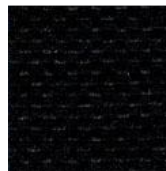
• Flamability: Pass California tech. Bulletin 117



Blue-413



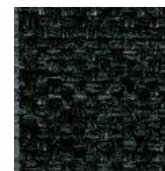
Navy-421



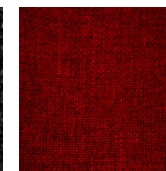
Black-452



Grey-431



Charc.-441



L. Burg.-463



AL20W-FC



AL22W-FC



PL20W-FC



PL22W-FC

Super Heavy Duty 450 lbs, Capacity, Waterfall 3" High Resilient Density Foam for Better Comfort

MODEL	Upholstery Type	Height Adjustment	Seat Dimensions	Back Dimensions	Footring	Base	Drag Chain	Caster
AL20W-FC	Conductive Fabric	21"-31"	21.5"W x 18"D	19"W x 16.5"H	20"	Polished Aluminum	No	9
AL22W-FC	Conductive Fabric	17"-22"	21.5"W x 18"D	19"W x 16.5"H	No	Polished Aluminum	No	9
PL20W-FC	Conductive Fabric	21"-31"	21.5"W x 18"D	19"W x 16.5"H	20"	Black Nylon	Yes	1
PL22W-FC	Conductive Fabric	17"-22"	21.5"W x 18"D	19"W x 16.5"H	No	Black Nylon	Yes	1

Conductive Seating Features:

Industrial Seating™conductive seating insures a safe, static-clear work area. All IS™ conductive seating models are equipped with conductive seat cushions, Back cushions, as well as all metal parts and the IS™ dual resistance system.

Isstat Group IV Fabrics ESD

• Material 98% Polyolefin, 2% Carbon Infused Nylon • Surface Resistance: 10⁶ omhs per Square

• Flamability: Pass California tech. Bulletin 117



Blue-413



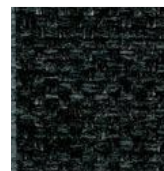
Navy-421



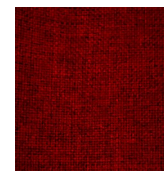
Black-452



Grey-431



Charc.-441



L. Burg.-463



AM20W-FC



AM22W-FC



PM20W-FC



PM22W-FC

Super Heavy Duty 450 lbs, Capacity, Waterfall 3" High Resilient Density Foam for Better Comfort

MODEL	Upholstery Type	Height Adjustment	Seat Dimensions	Back Dimensions	Footring	Base	Drag Chain	Caster
AM20W-FC	Conductive Fabric	21"-31"	21.5"W x 18"D	16"W x 16"H	20"	Polished Aluminum	No	9
AM22W-FC	Conductive Fabric	17"-22"	21.5"W x 18"D	16"W x 16"H	No	Polished Aluminum	No	9
PM20W-FC	Conductive Fabric	21"-31"	21.5"W x 18"D	16"W x 16"H	20"	Black Nylon	Yes	1
PM22W-FC	Conductive Fabric	17"-22"	21.5"W x 18"D	16"W x 16"H	No	Black Nylon	Yes	1

Conductive Seating Features:

Industrial Seating™ conductive seating insures a safe, static-clear work area. All IST™ conductive seating models are equipped with conductive seat cushions, Back cushions, as well as all metal parts and the IST™ dual resistance system.

Isstat Group IV Fabrics ESD

• Material 98% Polyolefin, 2% Carbon Infused Nylon • Surface Resistance: 10⁶ omhs per Square

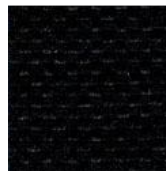
• Flamability: Pass California tech. Bulletin 117



Blue-413



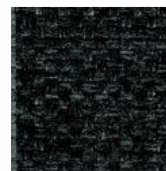
Navy-421



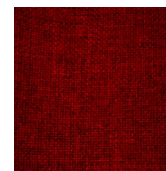
Black-452



Grey-431



Charc.-441



L. Burg.-463



DLC



ST



FLC

Controls	Description
DLC	Height and Back Tilt (This control has two levers for seat height and back angle)
ST	Height and Seat and Back Tilt (This control has two levers, one for height adjustment and the other for Seat and Back tilt adjustment and back height with
FLC	Three Lever for Individual Lift (Height lever adjustment, seat tilt adjustment back



FR04



FR05



FR06

Footring	Description
FR04	Knobless Nylon Footring 18" The Footring is Loosened and Tightened by Turning the Outer Ring. (option for models 20S, 45, 50 and 60)
FR05	Knobless Aluminum with Steel Ring 20" The Footring is Loosened and Tightened by Turning the Outer Footring. (option for models 10, 20M and 20W)
FR06	Nylon Center with Steel Ring, Footring 18" (option for models 20S, 45, 50 and 60)



TF



TA



TAA

Arms	Description
TF	Fixed Height and Width, Black
TA	Fixed Height and Adjustable Width, Black
TAA	Adjustable Height and Adjustable Width



1B



1U



1UB



2

Caster	Description
1B	Braking Caster , Recommended where Chairs may roll to easily when is Not Occupied
1U	Soft Urethane Caster, Recommended on Tile, Cement and other Hard Surfaces
1UB	Soft Urethane Braking Caster, Recommended for reduce Mobility when is Not Occupied
2	Nylon Glide, Recommended for use in areas where requiring limited mobility