



LOC-23-(Size)

Tech Wear Style Sheet



This ESD coat is a Category 2 groundable garment. The light-weight fabric makes this style one of our most popular garments. Surface resistivity of the fabric is 1×10^5 and the sleeve-to-sleeve resistance of the garment is guaranteed to stay below 3.5×10^7 for 100 washes or 2 years.

Part Number	LOC-23-(Size)
Style	Traditional Coat
Color	Blue (other colors available)
Sleeve	Adjustable snap sleeve termination
Closure	Front Snap
Length	Knee-length Coat
Size range	X-Small thru 8X-Large
Fabric	OFX-100
Content	87% Poly/Carbon 13%
Fabric Weight	2.3 ounces per square yard
Specification	ANSI/ESD STM2.1-Cat. 3
Guarantee	100 wash
Country of Manufacture	USA

(See back for dimensions & additional information)

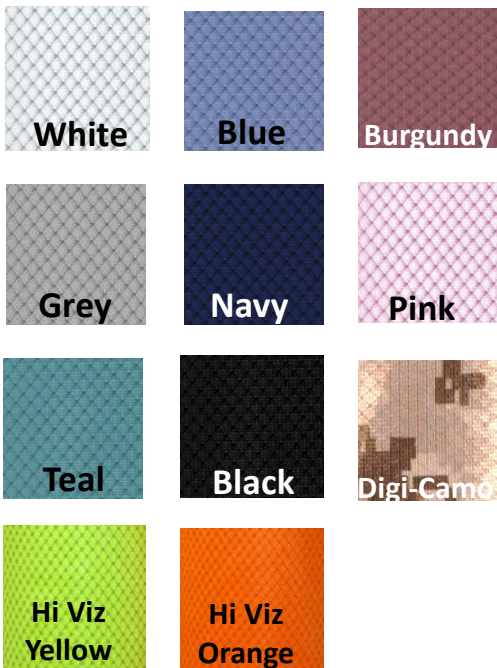


LOC-23-(Size)

This traditional-style coat comes with a lapel style collar and 1 breast pocket and two lower hip pockets. The “Reaching Hand Symbol” next to the breast pocket indicates that this garment is a tool for the prevention of static discharge. This garment is available in most colors for immediate shipment.

Part numbers by color:

- White LOC-13-(Size)
- Blue LOC-23-(Size)
- Burgundy LOC-33-(Size)
- Grey LOC-53-(Size)
- Navy LOC-63-(Size)
- Pink LOC-73-(Size)
- Teal LOC-83-(Size)
- Black LOC-93-(Size)
- Digi-camo LOC-D3-(Size)
- HiViz Yellow LOC-HVO3-(Size)
- HiViz Orange LOC-HVY3-(Size)



Dimensions for LOC-23												
Size	XS	SML	MED	LRG	XL	2XL	3XL	4XL	5XL	6XL	7XL	8XL
Fits Chest	30-32	34-36	38-40	42-44	46-48	50-52	54-56	58-60	62-64	66-68	70-72	74-76
Finished Chest	37	41	45	48	51	55	59	63	67	71	75	80
Finished Sleeve	31	31	32	34	35	36	36	36	37	38	39	39
Coat Length	34	37	38	39	39	40	40	40	40	40	40	40

Note: All measurements are rounded to the nearest inch.
 Length measurements are measured from center back of neck to finished hem.
 Finished sleeve is measured from center back of neck to bottom of cuff.