

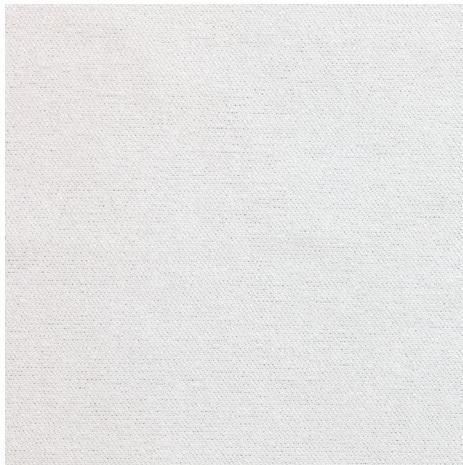
CapSure® – VP

Sealed Edge Cleanroom Laundered 100% Polyester Knit wiper

CapSure®–VP is a sealed edge cleanroom laundered wiper that has been specially engineered for superior surface cleaning ability. A patented (#8,431,497) surface treatment allows the wiper to capture and retain particulate contami-

likelihood of cross contamination of critical surfaces. CapSure®–VP’s no-run interlock knit construction provides a smooth surface texture and excellent absorbency characteristics.

This combination of particulate capturing technology, absorbency and very low fibers and particles results in the superior performance required in ISO Class 3 and above environments.



Key Attributes

- Patented surface treatment captures and retains particulate contamination, Patent #8,431,497
- 100% continuous filament polyester knit
- Sealed edge for reduced fiber contamination
- Laundered and packaged in Berkshire’s ISO Class 4 cleanroom

Benefits

- Minimal particles, fibers, ions and extractables.
- Airborne particle release 80% lower than competitive particle attraction wipers
- Captures 42 times more particles than competitive (untreated) wipers
- Retains 93% of particles captured
- Chemically compatible with IPA, Acetone and other solvents
- Immediate adsorption of liquids for efficient spill clean-up

Environmental

- Light weight, high absorbency design reduces landfill waste impact when compared to more traditional heavier weight designs

Other Class 3 and above wipers

- CapSure®–LP
- MicroSeal SuperSorb®
- MicroSeal SuperSorb® Lite
- UltraSeal® 3000
- MicroSeal® 1200
- ValuSeal® LP
- ValuSeal® HA
- ValuSeal® 1500

Applications

- Designed for use in ISO Class 3 and higher cleanroom environments
- Designed for the highest level of contamination control in critical processing applications
- Oxidation, Metallization, CVD or Photolithography processes
- Chamber cleaning and CMP processing
- Stencil and other print roll cleaning applications
- Steam autoclavable for aseptic applications
- Cleaning of medical device products

Value Pack Option

The value pack option provides the same great performance in a more economical bulk packaging format.

www.berkshire.com

Contact: Tel 1 800 242 7000 / 1 413 528 2602
 info@berkshire.com

BC_3087_08-2015

| | | | |
|----------|-------------------------|-------------------------|----------------------------|
| Americas | Tel 1 413 528 2602 | Fax 1 413 528 2614 | info@berkshire.com |
| Europe | Tel 44 (0) 870 757 2877 | Fax 44 (0) 870 757 2878 | enquiries@berkshire.uk.com |
| SE Asia | Tel 65 6252 4313 | Fax 65 6252 4312 | enquiries@berkshire.com.sg |
| Japan | Tel 81 3 5827 2380 | Fax 81 3 5827 2382 | master@berkshire.co.jp |

Technical Data:

| Attribute | | Units | Value | Test Method |
|----------------------|------------------|---|--------|--|
| Basis Weight | | g/m ² | 123 | TAPPI T-410 |
| Caliper | | µm | 368 | TAPPI T-411 |
| Fibers | ≥100µm | fibers/cm ² | 0.033 | TEST-RP.CC004.3, Sec 6.1.3 / Sec 6.2.2 |
| Liquid Particles | ≥0.5µm | x10 ³ /cm ² | 0.19 | TEST-RP.CC004.3, Sec 6.1.3 / Sec 6.2.1 |
| Airborne Particles | ≥0.5µm | particles/m ³ /ft ³ | 48 | TEST-RP-CC-003.3 |
| Sorbency | Capacity | mL/m ² | 325 | TEST-RP.CC004.3, Sec 8.1 modified / Sec 8.2 modified |
| | Efficiency | mL/g | 2.6 | |
| | Rate | seconds | 1 | |
| Non-Volatile Residue | DI Water | g/m ² | 0.0067 | TEST-RP.CC004.3, Sec 7.1.2 |
| | IPA | g/m ² | 0.0083 | |
| Ions | Na ⁺ | ppm | 0.41 | TEST-RP.CC004.3, Sec 7.2.2 |
| | K ⁺ | ppm | 0.070 | |
| | Ca ⁺⁺ | ppm | 0.031 | |
| | Mg ⁺⁺ | ppm | 0.0069 | |
| | Cl ⁻ | ppm | ND | |

Notes:

- Technical data represented in this table are typical values at the time of publication. These should not be used as product specifications.
- Due to differences in test methods applied and equipment utilized by different wiper manufacturers, valid product comparisons may only be obtained through side-by-side testing in the same test facility, under similar conditions
- Third party testing can be performed upon request

Order Information:

| Product | Number | Size | Shts/pk | Pks/cs | Style |
|-------------|----------------|------------------|---------|--------|------------|
| CapSure®-VP | CPSVP.0708B.8 | 7x8" (18x20cm) | 300 | 8 | Value Pack |
| CapSure®-VP | CPSVP.0909.8 | 9x9" (23x23cm) | 150 | 8 | Stacked |
| CapSure®-VP | CPSVP.0909B.8 | 9x9" (23x23cm) | 150 | 8 | Value Pack |
| CapSure®-VP | CPSVP.1212.14 | 12x12" (30x30cm) | 75 | 14 | Stacked |
| CapSure®-VP | CPSVP.1212B.14 | 12x12" (30x30cm) | 75 | 14 | Value Pack |

Other Berkshire Products



Wipers



Glove Liners



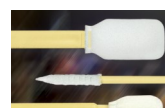
Mop Systems



Documentation Systems



Face Masks



Swabs